



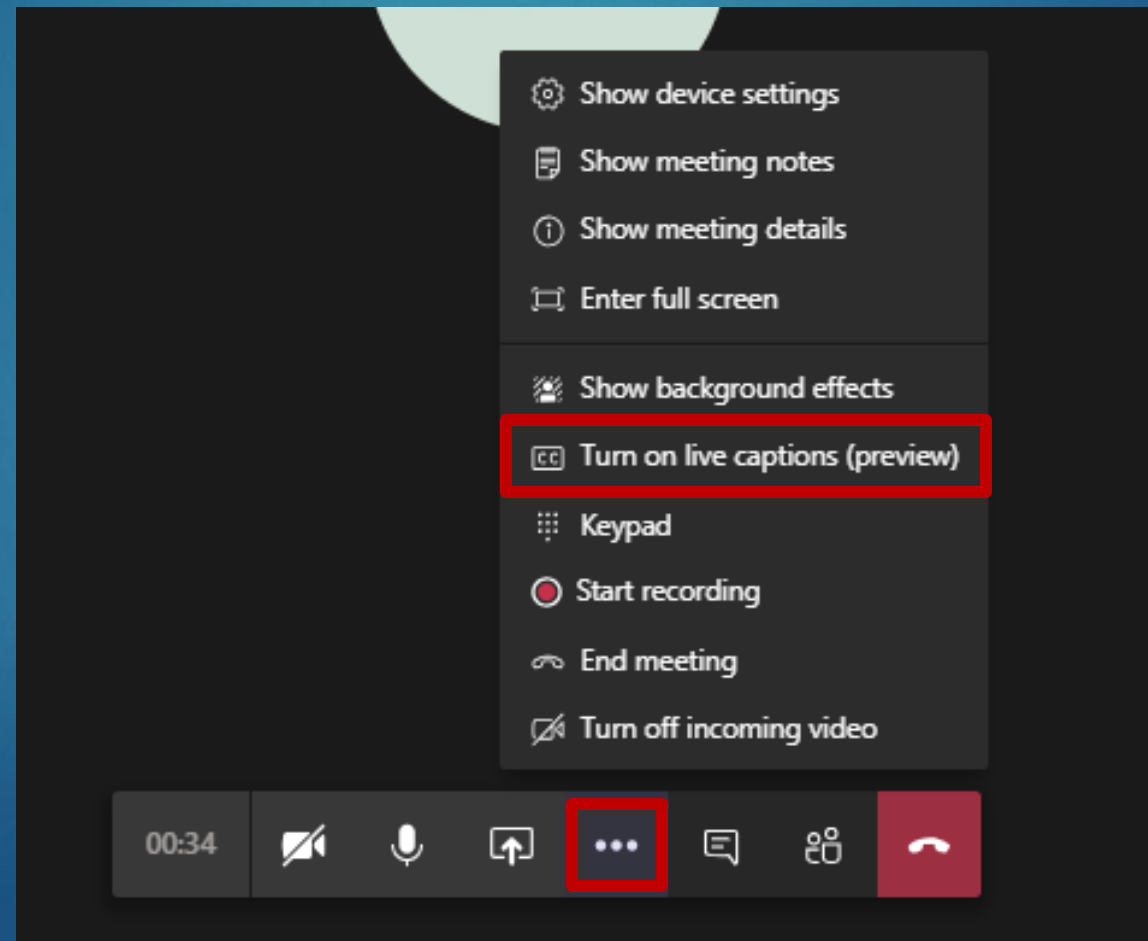
Silicon Valley Clean Water Commission Meeting

FEBRUARY 14, 2022

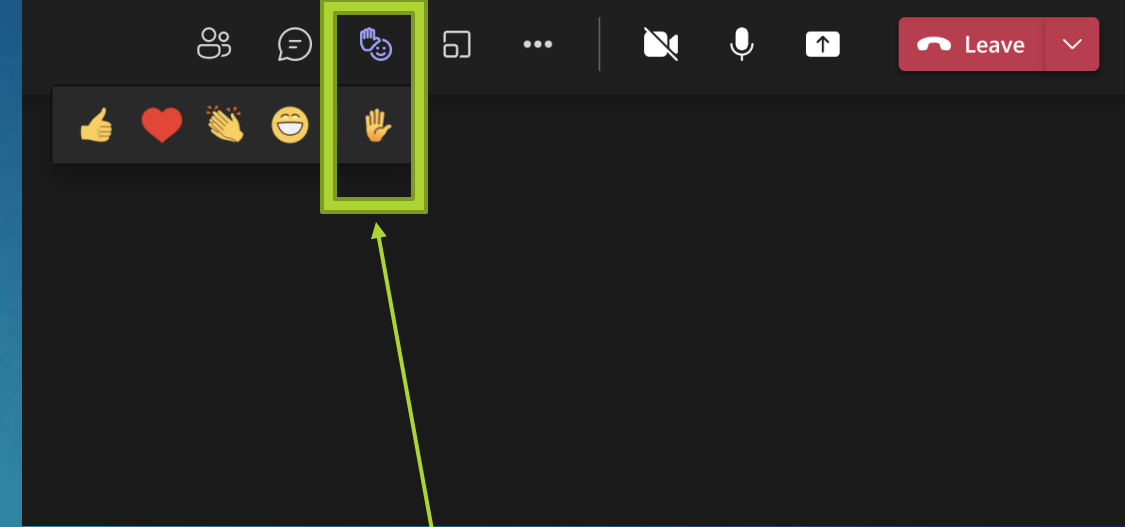


Turn on Live Captions

- ▶ To turn on live captions, go to your meeting controls and select **More actions ...** > **Turn on live captions (preview)**.



Public Comment



- ▶ To provide public comment during the meeting:
 - ▶ Click on raise hand button
 - ▶ SVCW will unmute member of the public
 - ▶ State your name and make your comment
 - ▶ Three minutes is provided for comment
- ▶ If joined via phone:
 - ▶ Unmute yourself and state what item you want to comment on





Agenda Item 8A



Remote Commission Meetings

Commission Meetings Attendance



- ▶ Remote Meetings Allowable
- ▶ Per AB361 Amendment to CA Gov't Code
 - ▶ Waiver of in-person meeting requirements under Brown Act
 - ▶ Sunsets Jan 1, 2024
 - ▶ Will be replaced to allow teleconference meetings w/o emergency condition
- ▶ In-Person Meetings pose Imminent Risk to Health and Safety of Attendees
- ▶ Reconsider / Make Findings every 30 Days

Recommendation

Adopt Resolution Allowing for Remote
Teleconference Meetings under Emergency
Conditions related to Covid-19



SVCW

Silicon Valley Clean Water



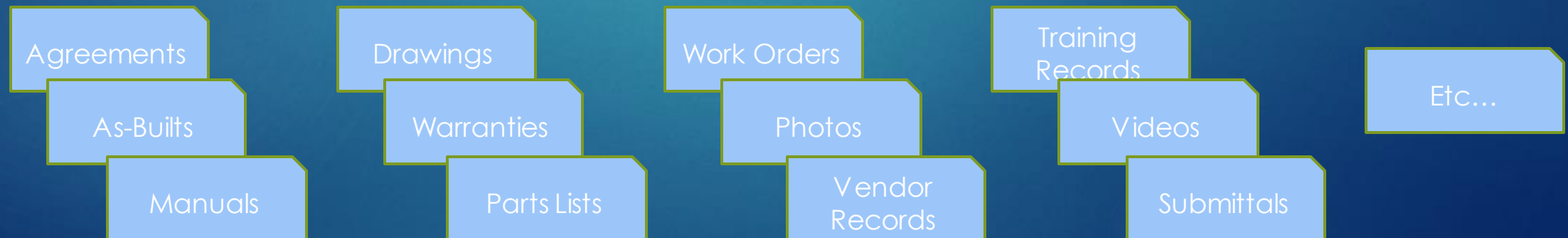


Agenda Item 8B

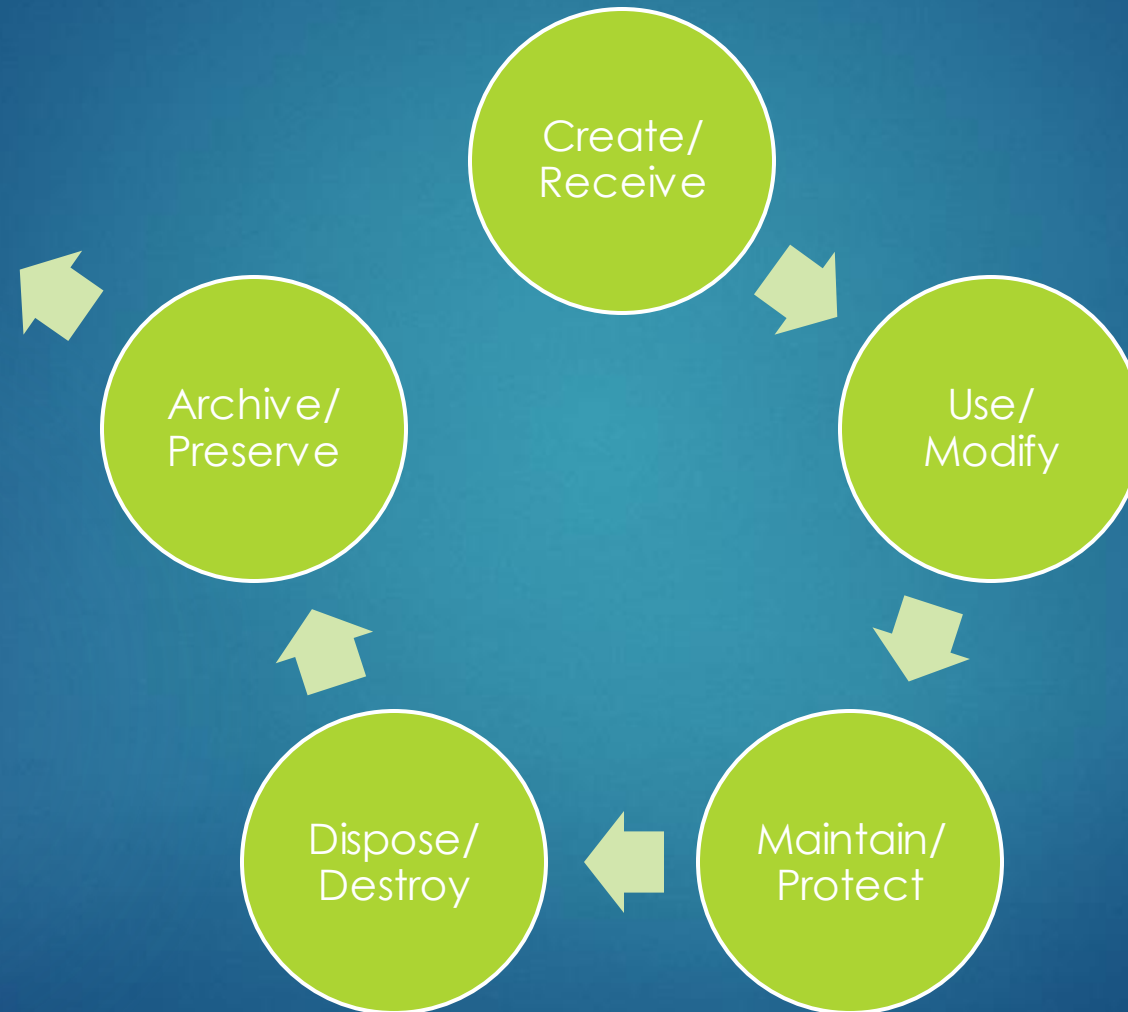
Equipment Information Management System

Equipment Record Overview

- ▶ Currently manage **4,000+** pieces of equipment
- ▶ Will approach **10,000** once RESCU completes
- ▶ One piece of equipment = 10 - 100 records



Records Management Lifecycle



Effective Records Management



Workflow

- Solidly Designed & Secure

Equipment Naming-Taxonomy

- Easy-to-Remember & Use

Version Control

- Distinguishes Drafts/Duplicates from Finals

Retention Policies

- Rule-Based

Current Records Management

- ▶ Each Division manages records differently
 - ▶ Separate network drives and physical files
- ▶ Records Volume increase ~25% annually
- ▶ 2019 Microsoft SharePoint platform
 - ▶ Launch point for enhanced equipment data management

Proposal

Deploy Equipment Information Management System

- ▶ Prior to RESCU Completion

Retain Nexinite LLC

- ▶ Microsoft Partner
- ▶ Implemented SharePoint at SVCW

Approve Task Order

- ▶ Discovery, Design, Development & Implementation

Recommendation

Approve Task Order to Nexinite for
Equipment Information Management
System Development - \$892,000



Agenda Item 8C



RESCU Program Gravity Pipeline Project Change Order

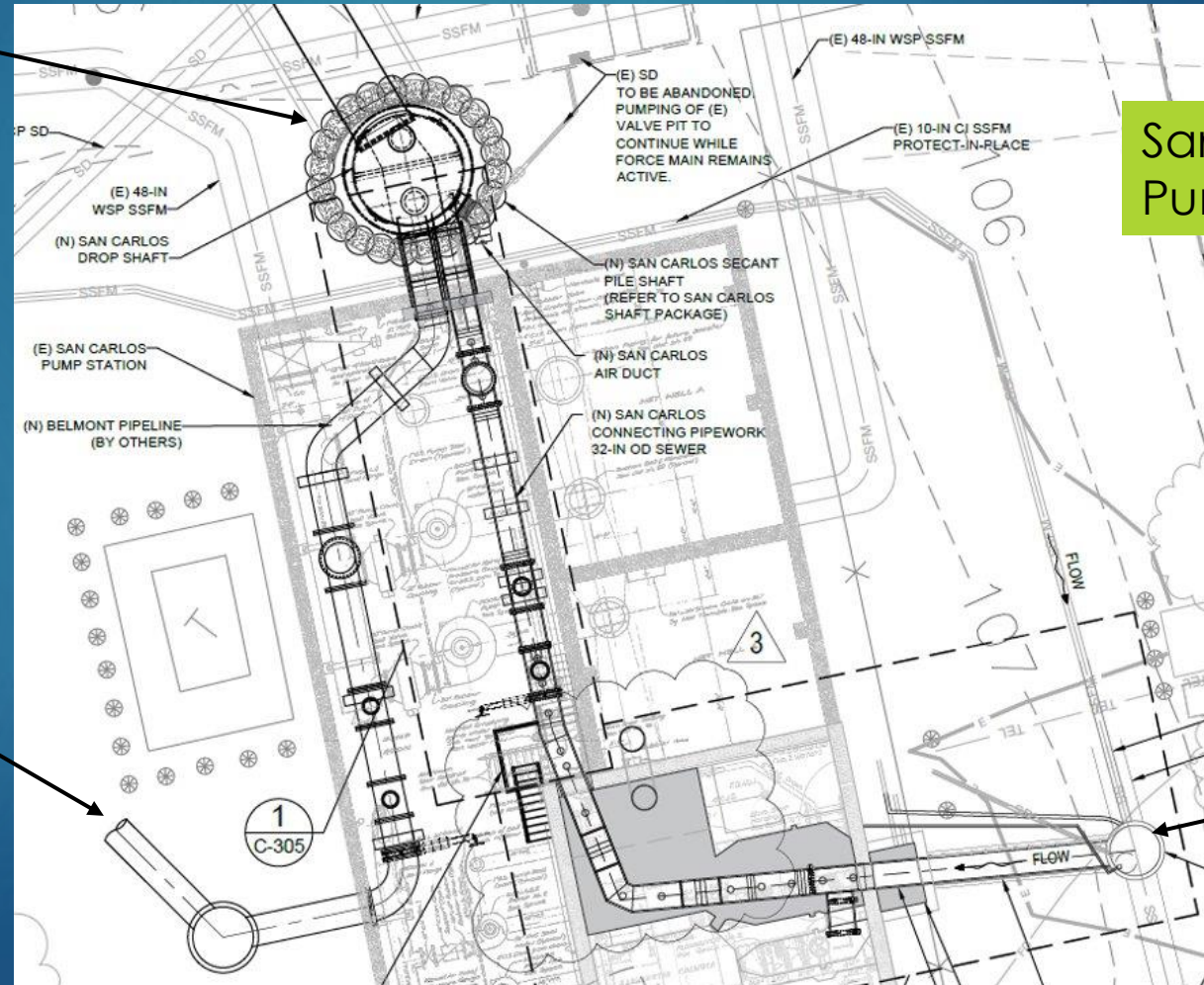
San Carlos Connecting Piping

San Carlos
Drop Shaft

San Carlos
Pump Station

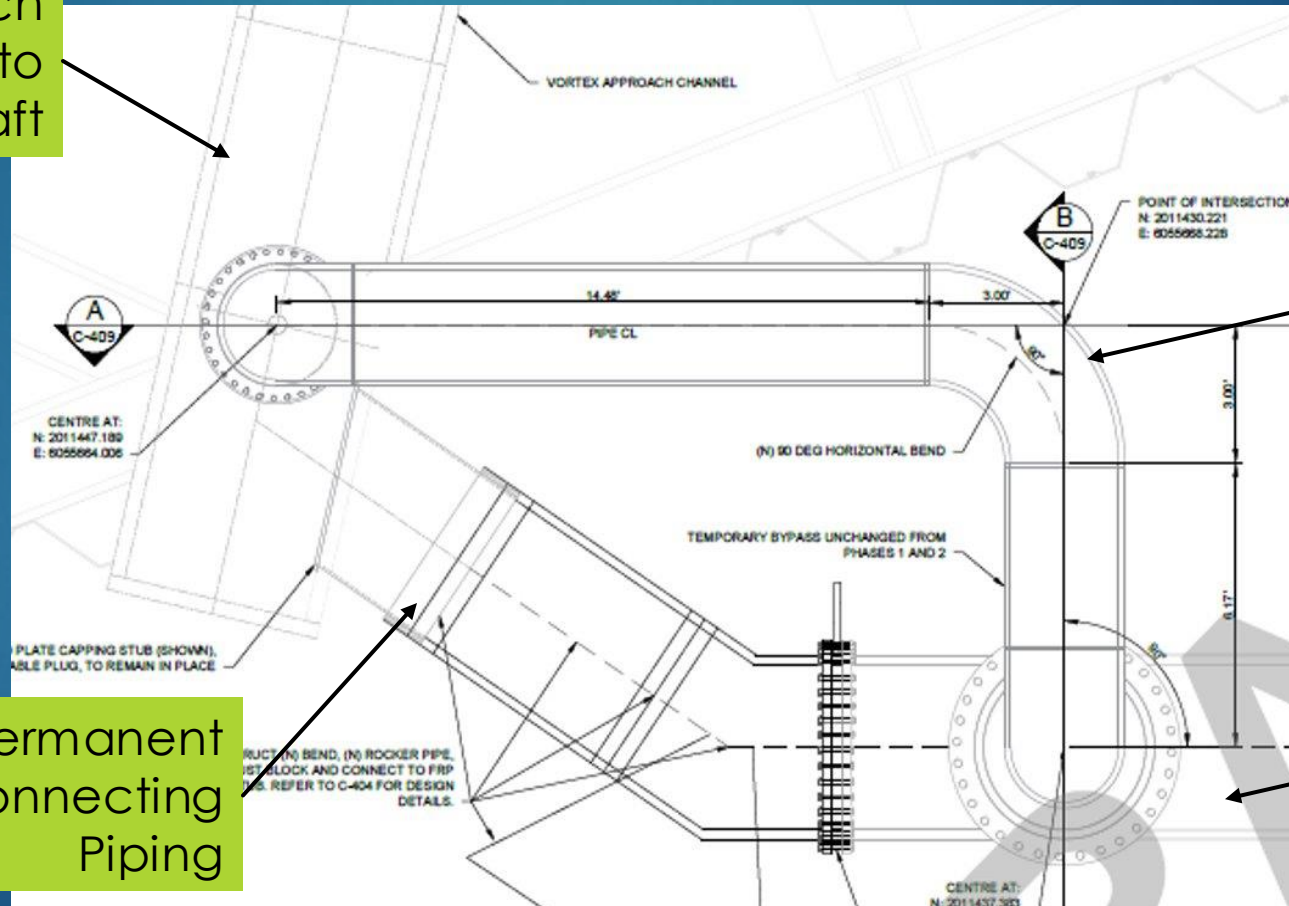
Belmont
Gravity
Pipeline

San Carlos
Collection
System



Bair Island Connecting Piping

Approach
Channel to
Tunnel Shaft

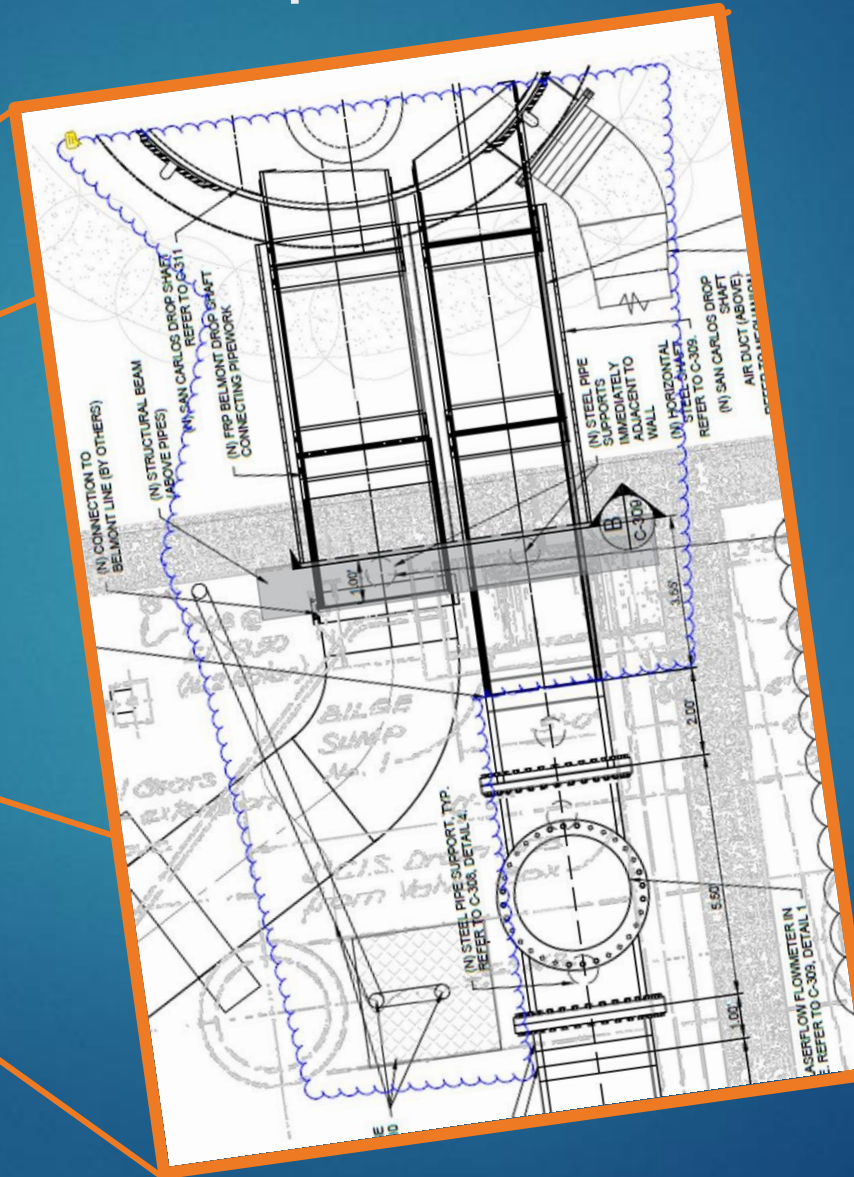
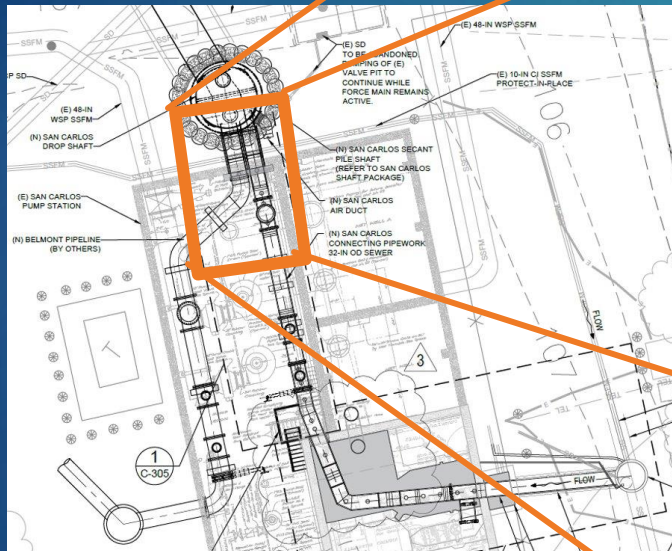


Temporary
Piping

Permanent
Connecting
Piping

Existing 48"
Force Main

BBJV Reduced Scope



Pump Station
Modifications

Ground
Improvement

Tunneling

Install Pipe
Stubs

Recommendation

Approve Contract Change Order
for Gravity Pipeline Project
Connecting Piping @ San Carlos
Drop Shaft – \$1,990,000





Agenda Item 8D

Recycled Water Planning Activities



Potable Reuse Exploratory Plan (PREP) Phase 3 – PREP Feasibility Study

SVCW Commission Meeting



PREP Phase 1-3 Overview

- **Phase 1:**
Initial Study
- **Phase 2:**
Concept and
Institutional Studies
- **Phase 3:**
Feasibility Study



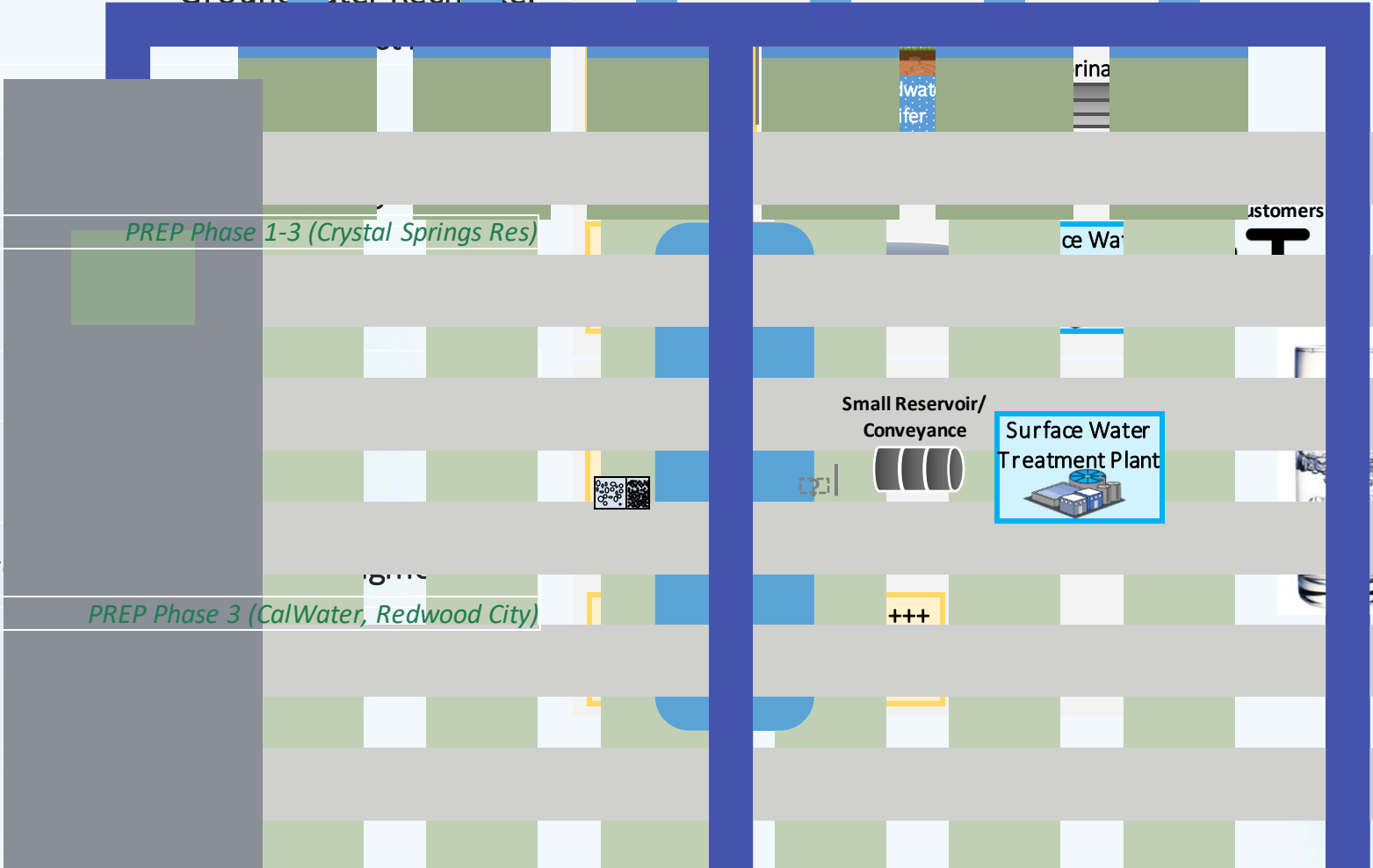
Types of Potable Reuse

POB

Groundwater Recharge:
Surface Spreading



Groundwater Recharge:



PREP Phase 1-3 (Crystal Springs Res)

rina

lwater
ifer

ustomers

ce Wa

Small Reservoir/
Conveyance

Surface Water
Treatment Plant

Tr

PREP Phase 3 (CalWater, Redwood City)

+++

Source Waters



PREP Phase 3 | Project Facilities

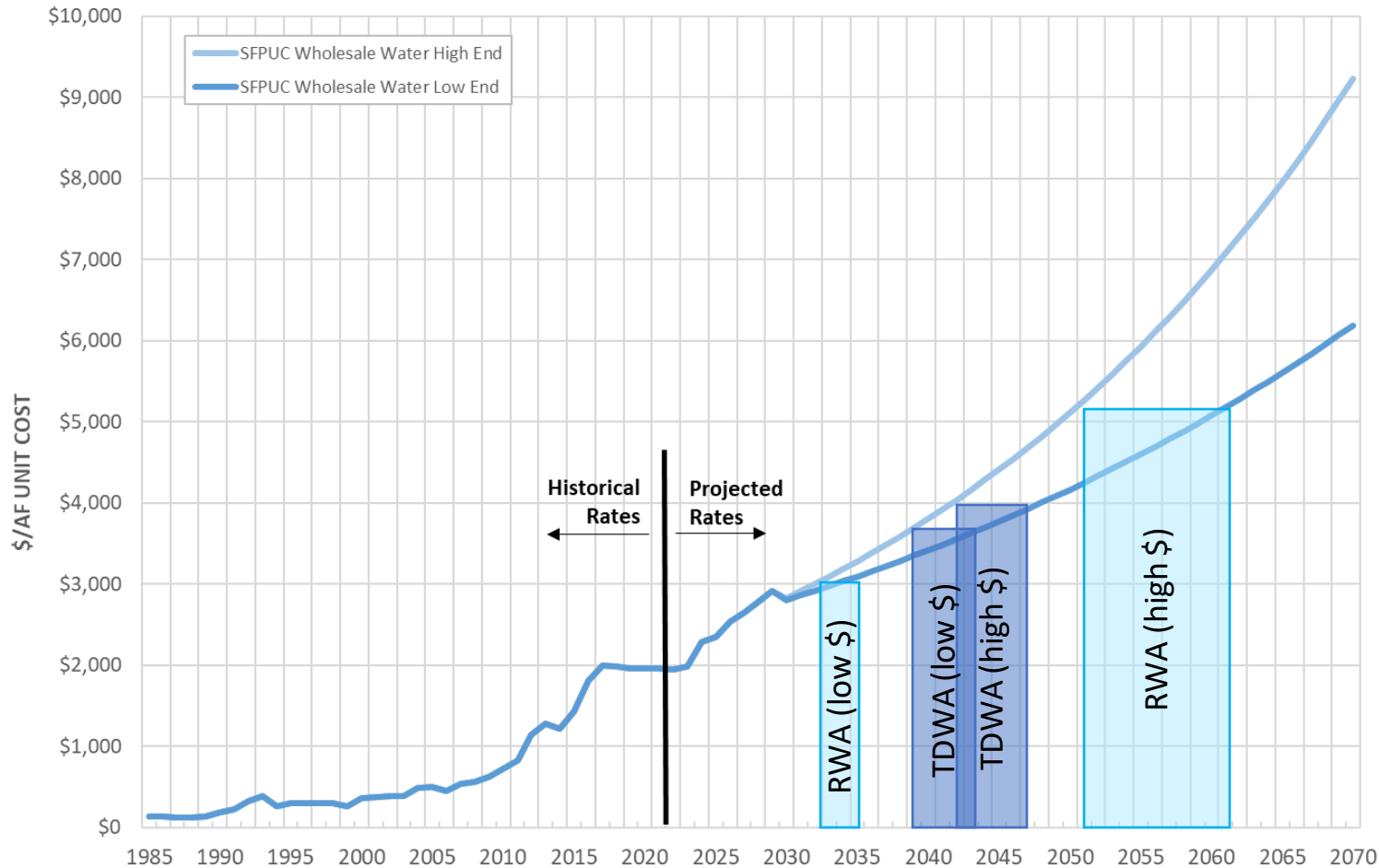
- **Advanced Water Purification Facility** *4 to 5.5 acres*
- **Pipelines (tertiary effluent and purified water)** *up to 22 miles*
- **Pump Stations**
- **Brine Discharge** *up to 3 miles*
- **Storage** *up to 6 MG*
- **Potable Water System Tie-ins**

PREP Phase 3 | Alternatives

| Alt | Description | Ave Annual Water Deliveries (MGD) | Ave Annual Water Deliveries (AFY) |
|-------------------------------------------------------------------------------------------|-------------------------------------------------------------------------------------------|-----------------------------------|-----------------------------------|
| ALTERNATIVE 1 - Reservoir Water Augmentation 6 MGD to Crystal Springs Reservoir | | | |
| 1a | AWPF near SVCW w/ continuous operation | 6 | 6,720 |
| 1b | AWPF Hwy 101 Site w/ continuous operation | 6 | 6,720 |
| 1c | AWPF near SVCW w/ seasonal stepped operation in wet years | 5.25 | 5,880 |
| 1d | AWPF near SVCW w/ seasonal shut down in wet years | 4.5 | 5,040 |
| ALTERNATIVE 2 - Reservoir Water Augmentation 12 MGD to Crystal Springs Reservoir | | | |
| 2a | AWPF near SVCW w/ continuous operation | 12 | 13,440 |
| 2b | AWPF Hwy 101 Site w/ continuous operation | 12 | 13,440 |
| 2c | AWPF near SVCW w/ seasonal stepped operation in wet years | 10.5 | 11,760 |
| 2d | AWPF near SVCW w/ seasonal shut down in wet years | 9 | 10,080 |
| ALTERNATIVE 3 - Direct Potable Reuse 6 MGD Raw Water Augmentation | | | |
| 3a | Raw Water Augmentation at Bear Gulch Reservoir w/ continuous operation | 6 | 6,720 |
| 3b | Raw Water Augmentation at Bear Gulch Reservoir w/ seasonal stepped operation in wet years | 5.25 | 5,880 |
| ALTERNATIVE 4 - Direct Potable Reuse 6 MGD Treated Water Augmentation | | | |
| 4a | Treated Water Augmentation (TWA) SVCW Supply with Local Use (Redwood City/CalWater) | 6 | 6,720 |
| 4b | TWA SVCW Supply, Hwy 101 Site with Local Use (Redwood City/CalWater) | 6 | 6,720 |
| 4c | TWA San Mateo Supply and Local Use (Foster City/CalWater) | 6 | 6,720 |
| ALTERNATIVE 5 - Direct Potable Reuse 12 MGD Treated Water Augmentation | | | |
| 5 | TWA SVCW and San Mateo Supply and Local Use (Redwood City/CalWater) | 12 | 13,440 |

Cost Comparison

SFPUC Wholesale Projections - Extended through 2070



Notes: 2021 - 2029 water rate increases based on assumptions from 2021 BAWSCA Bond Surcharge Study.
2030 - 2070 projection based on 2% to 3% escalation per year, for low-end and high-end projections respectively.

Purified Water Cost
Compared
w/SFPUC Wholesale Rates

RWA = Reservoir Water Augmentation
TDWA = Treated Drinking Water Augmentation

PREP Next Steps

- Draft Phase 3 Report
 - Format to Meet Funding Requirements
 - USBR Title XVI FS / SWRCB RWFP
- Next Phase Scoping
 - Scope & Fee to be “CEQA Ready” (~10% Design Study) by July 2023
 - Nexus w/Regional Water System’s Water Supply Planning
 - Develop Public Outreach Concept Strategy
- PREP Parties MOA
 - Agencies talk to Commissions/Boards/Councils
 - Define Cost-sharing for Next Phase

SVCW Next Steps

- Regular updates to SVCW Commission
 - Monthly to begin
 - Identify points of interest
- PREP Parties Memorandum of Agreement (MOA) Addendum







Agenda Item 8E

Organics Co-Digestion

Long-Standing Work Effort

- ▶ 2014 SVCW and SBWMA executed an MOU to collaborate
- ▶ Begin with a Pilot Facility w/SF-Recology
- ▶ March 2020, New MOU for Pilot Study w/SBWMA



Why Pursue a Project?

In 2014 and 2020 Anticipated Significant Benefits to a Full-Scale Project

Power Generation

- 2+/- MW Power Potential
- Electrical Self-Sufficiency

Reduce P.G.&E. Dependence

- Onsite Generated Power
- Consolidated Electrical Demands

Aid Sister Agency

- SBWMA
 - Overlapping service area
 - Environmental positive
 - Meet regulatory requirements

Sell Excess Power(?)

- Peninsula Clean Energy
- Help SVCW ratepayers

Pilot Facility Site



SBWMA Processing



Delivery from SBWMA



Reject Material



At SBWMA:
30% Raw Material Rejected



At SVCW:
~0.1% Material Received Rejected



Current Status

- ▶ Pilot Testing Complete
- ▶ Results Provided to SBWMA
 - ▶ \$50/ton tipping fee; covers SVCW costs
 - ▶ Seeking relaxation of air permit requirements
- ▶ No Future Plans for Full-Scale Project



Thank You